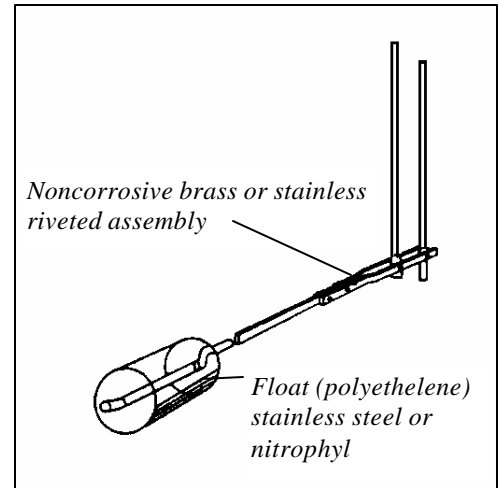
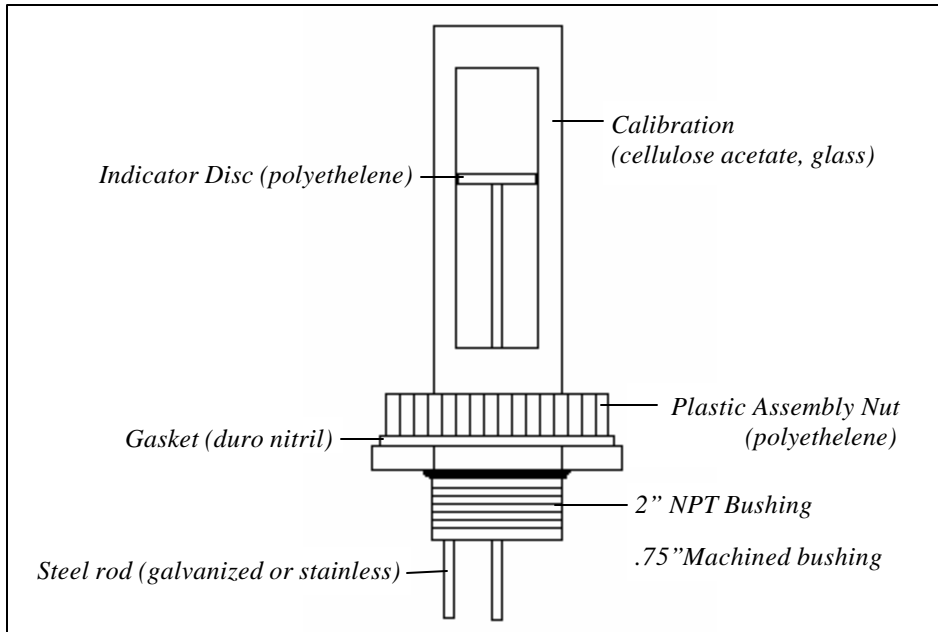


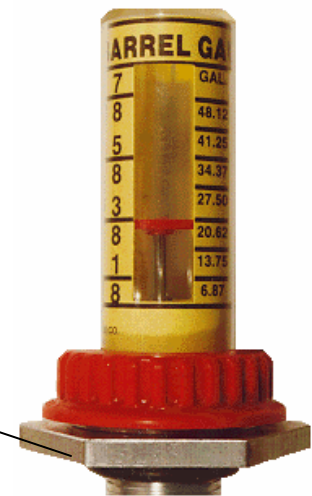
# The Barrel Gauge

*Ideal For Standing Barrels*



*Please specify tank size and tank opening dimension when ordering*

**Our Barrel Gauge is specifically designed for use in a wide variety of standing barrels. It is available for the 55, 30, and 15 gallon drum models. This gauge comes available in plastic, galvanized, and stainless steel versions. Direct mechanical action, reliable construction and easy readability make this gauge a perfect choice for barrel volume measurement.**



*Arrows on bushing for float alignment*

**Available with optional ALARM (see page 17)**

## KRUEGER **SENTRY** GAUGE

**KRUEGER SENTRY GAUGE CO. INC.**  
 1873 Siesta Lane: Green Bay, WI 54313-8021  
 Phone:(920) 434-8860 : Fax (920) 434-8897  
 Office Hours: 7:00 A.M. to 5:00 P.M. (CST)  
<http://www.kruegersentrygauge.com>

# The Barrel Gauge

---

- A. **CALIBRATION ASSEMBLY:** Inner and outer plastic housings with printed calibration paper between housings. (**options**-glass inner piece)
- B. **INDICATOR DISC:** Red HDPE plastic
- C. **LOCK NUT:** Red plastic to hold calibration assembly in place. (**options**-aluminum lock nut)
- D. **DURO NITRILE GASKET:** On which flanges on base of calibration assembly are firmly seated to prevent leakage. (**options**-viton gasket)
- E. **ALUMINUM DIE CAST BUSHING:** Type B-1.5 fits 1.5" standard npt tank flange. Type B-2 fits standard 2" npt tank flange. B-3/4 fits standard 3/4" npt tank flange. (**options**-stainless steel for 3/4" only, PVC plastic-page...7)
- F. **STANDARD ROD:** 0.1875 dia. galvanized steel rod. (**options**-stainless steel, peek plastic-page...7)
- G. **PUSH ROD:** 0.125 dia. galvanized steel rod activates indicator disc by movement of float arm (I). (**options**-stainless steel, peek plastic-page...7)
- H. **BRASS RIVETS:** Four brass tubular rivets. (**options**-non-riveted, stainless)
- I. **FLOAT ARM ASSEMBLY:** 0.1875 x 0.0625 galvanized steel flat rod, including bracket and rod, attached to standard, push rod, and plastic float. (**options**-stainless steel, plastic-page...7)
- J. **PLASTIC FLOAT:** High density polyethelene float 1.125" dia. x 3.0" long. (**options**-stainless float, nitrophyll float, 3/4" float)-Stainless floats do not fit through 3/4" openings.

Barrel Gauges are manufactured to fit specific barrel sizes from 15 gallon, 30 gallon, and 55 gallon drums. Standard rod (F), push rod (G), float arm assembly (I) are varied in length to provide correct operation of gauge.

**Ordering Instructions**—Part numbers are as follows B-(gallons)-(opening). Example—B-55-3/4".

**Other Options**—Alarm (see page...17). Gauge Guard (see page...20)

**KRUEGER SENTRY GAUGE**

**KRUEGER SENTRY GAUGE CO. INC.**  
1873 Siesta Lane: Green Bay, WI 54313-8021  
Phone:(920) 434-8860 : Fax (920) 434-8897  
Office Hours: 7:00 A.M. to 5:00 P.M. (CST)  
<http://www.kruegersentrygauge.com>